



SAE – Automation, s.r.o. Nová Dubnica  
Solid And Effective partner at development  
of your products and industry automation

## Installation & Activation of SNMP Service and SNMP Trap Service



Installation & Activation of SNMP Service and SNMP Trap Service for  
SNMP applications from SAE – Automation, s.r.o.

# Installation & Activation of SNMP Service and SNMP Trap Service for SAEAUT SNMP OPC Server application

*The purpose of the article is to give answers and useful recommendations on the most frequently asked questions from our customers, which relate with SNMP Service and SNMP Trap service installation and activation.*

## Introduction

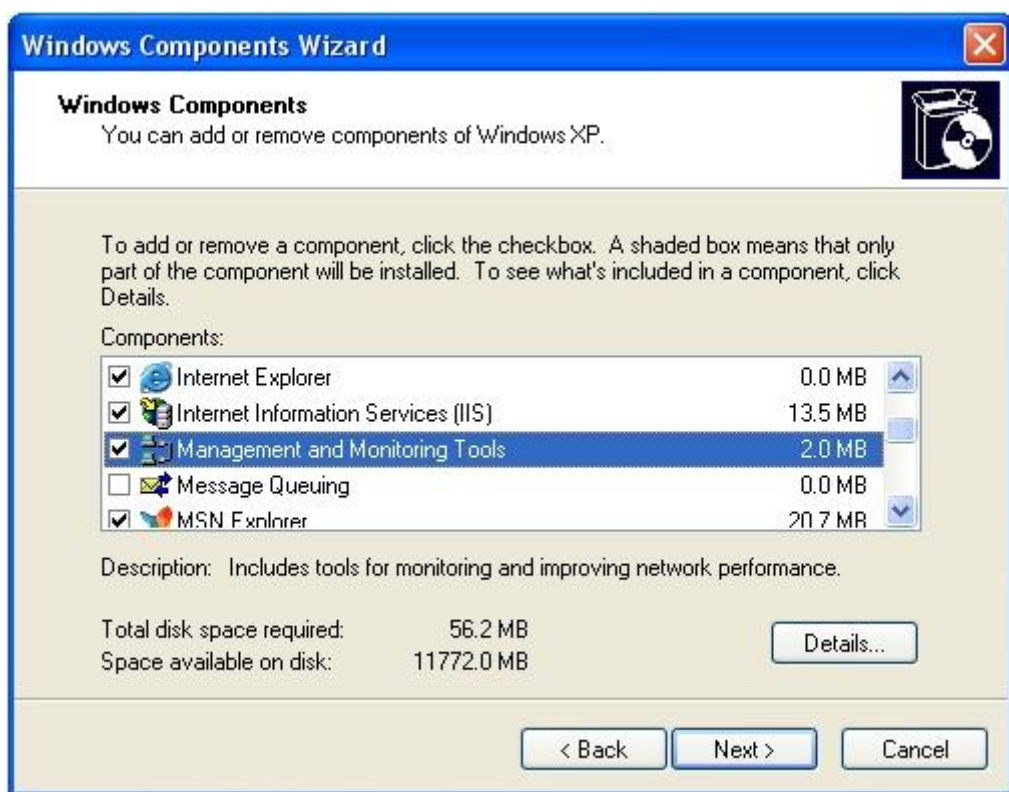
In typical SNMP usage, there are a number of systems to be managed, and one or more systems managing them. A software component called an agent (see below) runs on each managed system and reports information via SNMP to the managing systems. For the better computer management Microsoft implemented the SNMP Service and SNMP Trap Service to its operating systems. This document deals with Windows XP operating system.

Finally, this document should perform as a user guide which will lead you step-by-step through your SNMP Service and SNMP Trap service installation and activation in order to establish reliable and secure SNMP connection.

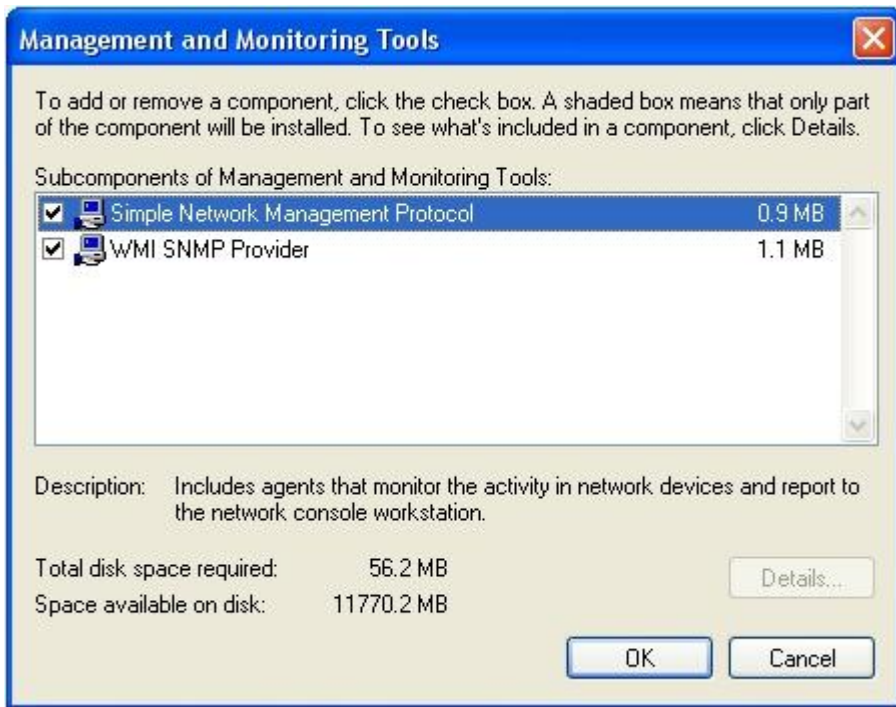
# SNMP Service

To install **SNMP Service (SNMP agent)**, please do the following:

1. Logon as Administrator.
2. Click on the Windows Start ⇒ Control Panel ⇒ Add and Remove programs.
3. Click on Add/Remove Windows Components. The Windows Components Wizard should be shown (see Figure 1).
4. In the Components, select Management and Monitoring Tools and then click Details.
5. Select the Simple Network Management Protocol check box (see Figure 2) and click on OK button.
6. In the Windows Components Wizard click on Next button.



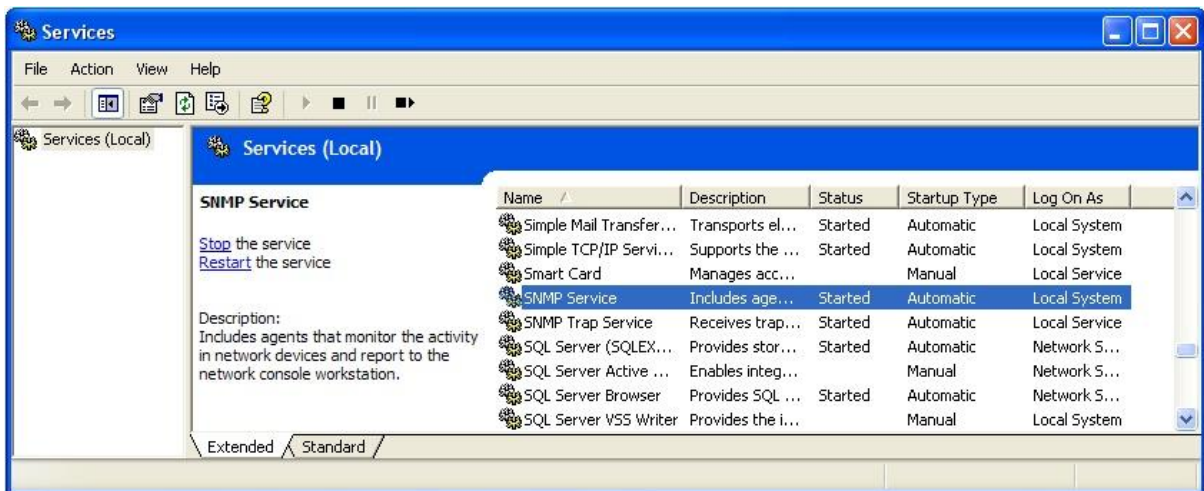
**Figure 1:** Windows Component Wizard.



**Figure 2:** Management and Monitoring Tools.

To check that **SNMP service (agent)** is installed, please do the following:

1. Click on the Windows Start ⇒ Control Panel ⇒ Administrative tools ⇒ Services.
2. Scroll through the right frame to locate SNMP Service. (see Figure 3)

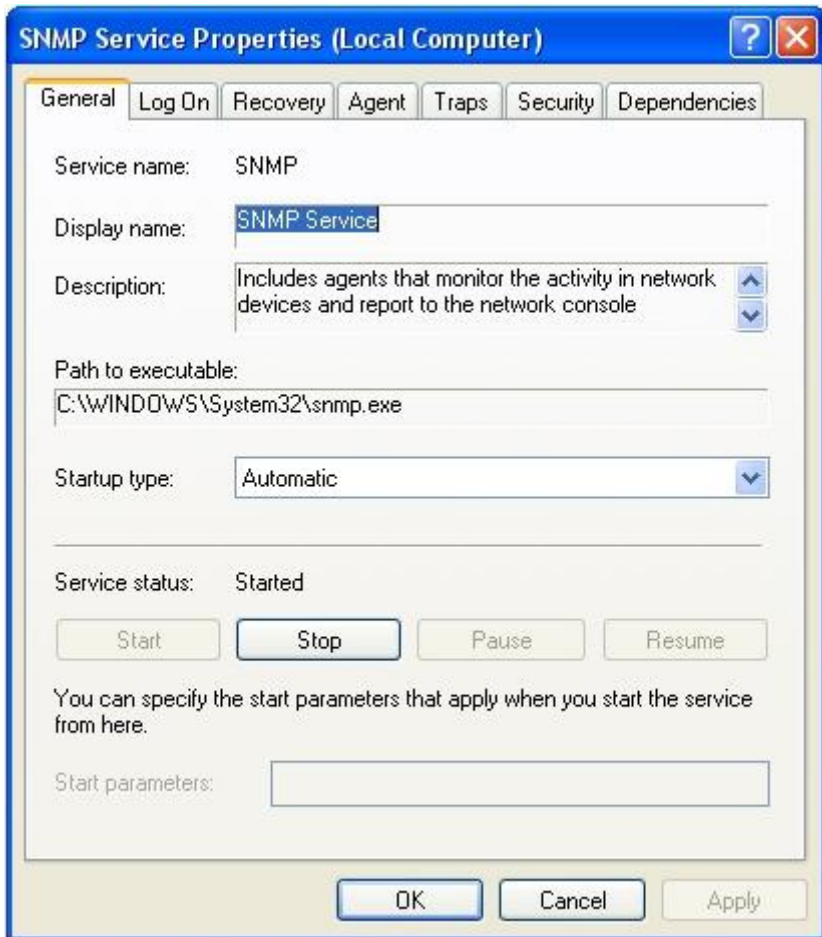


**Figure 3:** The SNMP Service is installed and activated.

To make sure that **SNMP service (agent)** is started before you attempt testing, please look at the **Status** field (Figure 3).

To ensure that **SNMP service (agent)** starts up automatically, please do the following:

1. Click on the Windows **Start** ⇒ **Control Panel** ⇒ **Administrative tools** ⇒ **Services**.
2. Scroll through the right frame to locate **SNMP Service** (see Figure 3).
3. Right-click on **SNMP Service** and choose **Properties**.
4. Under the **General** tab set the **Startup type** to **Automatic** (see Figure 4).
5. Click on **OK** button.



**Figure 4:** The SNMP Service Properties dialog – General tab.

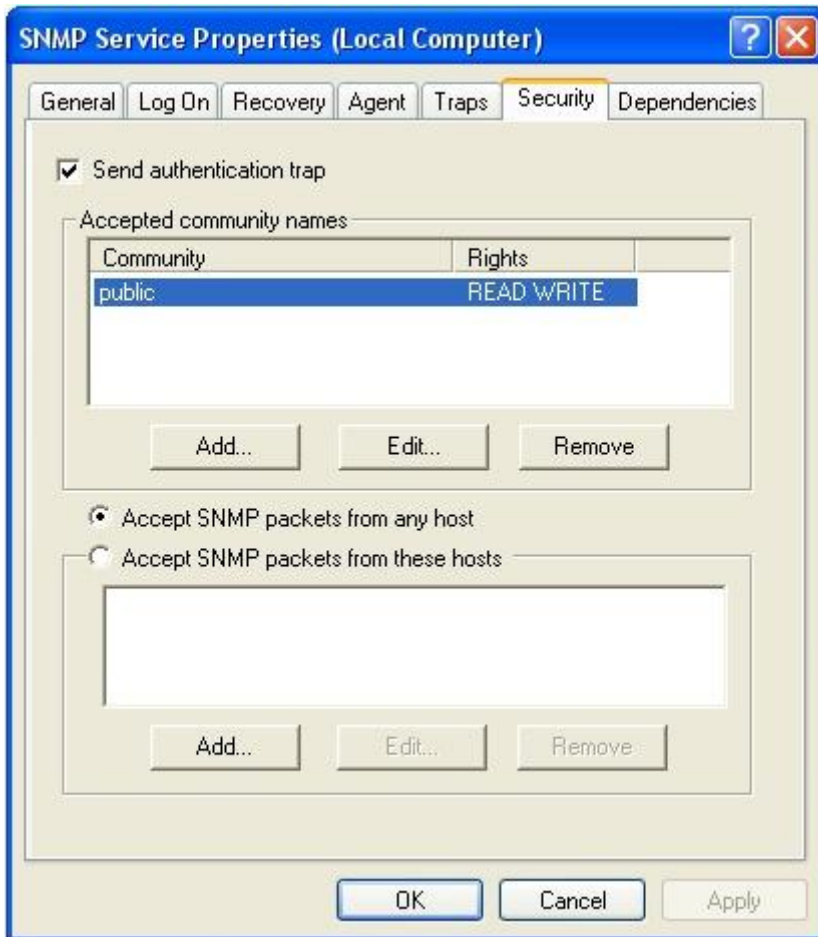
To adjust the **community** strings for this **SNMP service (agent)**, please do the following:

1. Click on the Windows **Start** ⇒ **Control Panel** ⇒ **Administrative tools** ⇒ **Services**.
2. Scroll through the right frame to locate **SNMP Service** (see Figure 3).
3. Right-click on **SNMP Service** and choose **Properties**.
4. Click on the **Security** tab. (see Figure 5).
5. Click on **Add** under the **Accepted community names**. Here you will enter a community name and choose the rights for that name. (see Figure 6). Click on **OK** button in the **SNMP Service Configuration** dialog.

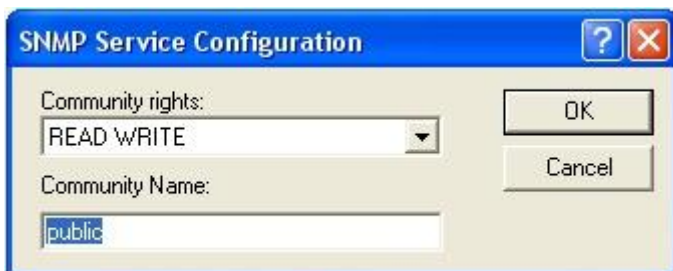
For example:

- Community rights: READ WRITE
- Community Name: public

6. Click on OK button in the SNMP Service Properties dialog.



**Figure 5:** The SNMP Service Properties dialog – Security tab.



**Figure 6:** The SNMP Service Configuration dialog.

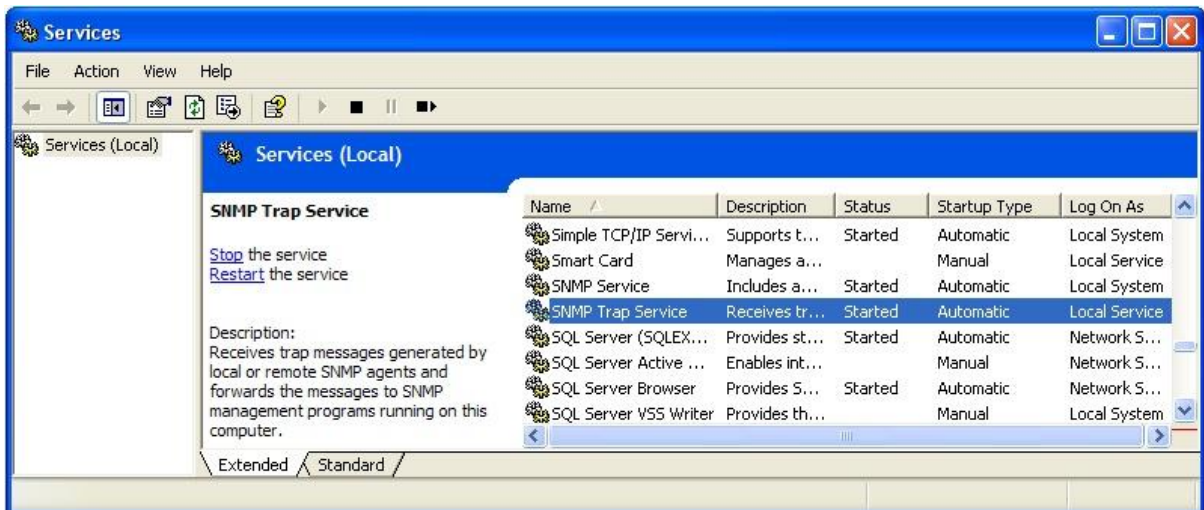


# SNMP Trap Service

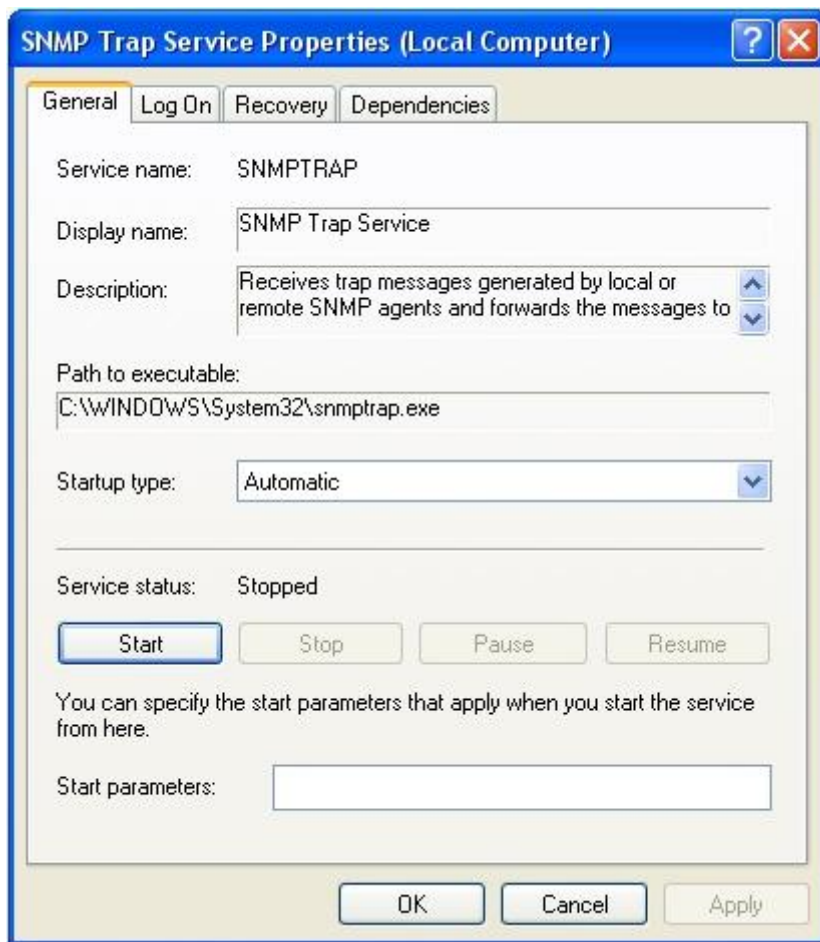
The SNMP Trap Service receives SNMP trap messages generated by local or remote SNMP agents and forwards the messages to SNMP management programs running on this computer.

To enable the receiving **SNMP trap messages** on your managing system, please do the following:

1. Click on the Windows **Start** ⇒ **Control Panel** ⇒ **Administrative tools** ⇒ **Services**.
2. Scroll through the right frame to locate **SNMP Trap Service**. If the **SNMP Trap Service** is not installed then please install it (see Figure 1). (*The same steps as were already mentioned above in section Windows 2000/XP...*)
3. Right-click on **SNMP Trap Service** and choose **Properties**. (see Figure 7, Figure 8)
4. Click on the **General** tab. (see Figure 8).
5. Click on the **Start** button if **SNMP Trap Service** is not started.
6. Click on **OK** button.



**Figure 7:** The SNMP Trap Service.



**Figure 8:** The SNMP Trap Service - Start.

## **Disclaimer**

*The information contained in these pages is based on our testing and practices experience. SAE – Automation, s.r.o. and the authors of this document assume no responsibility for direct, indirect, or consequential liability for its accuracy or suitability for a user's particular application. The reader is responsible for proper application to their particular situation.*